



Millacres, Station Road, Ware SG12 9PU

Guide price £325,000



2

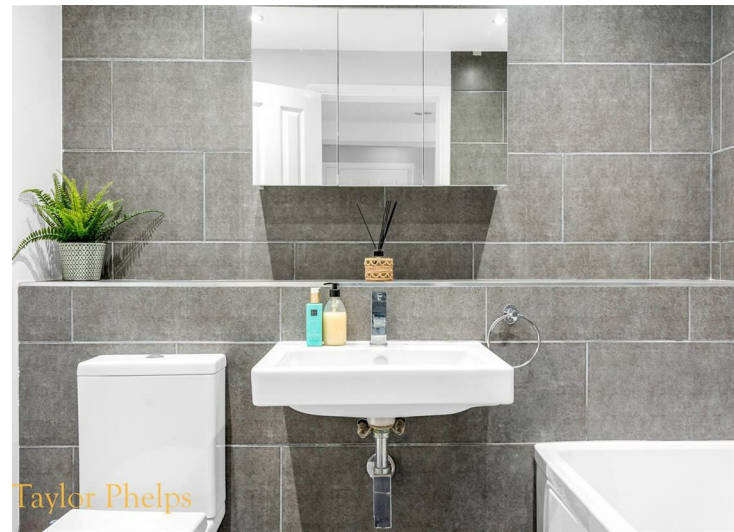


2

Taylor Phelps

Estate Agency

*Taylor Phelps are pleased to offer this spacious two bedroom ground floor apartment positioned within this highly regarded gated development in Ware town centre close to Ware train station which serves both Hertford East and London Liverpool Street! This superb apartment benefits from its own private entrance door, two modern bathrooms, a good size living room with separate high spec refitted kitchen and an extended lease. Externally there is parking for both residents and visitors and the added benefit of EV charging points.*

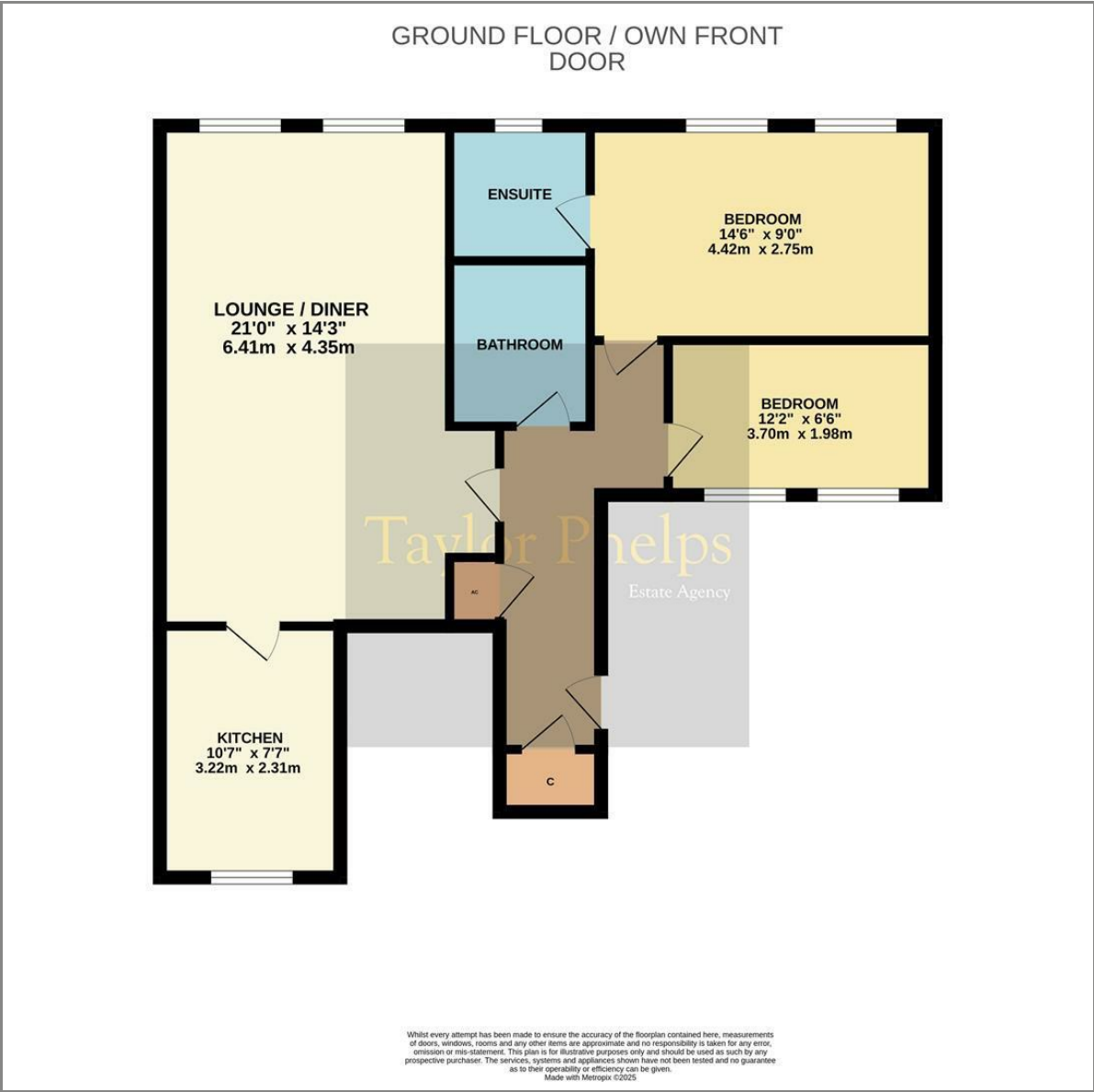




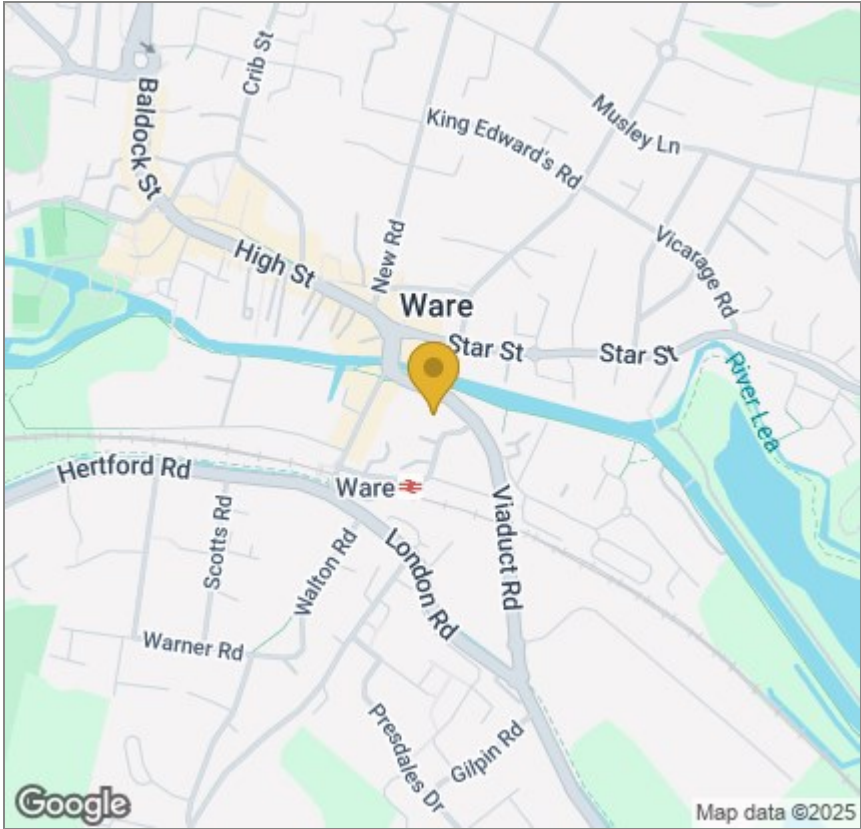




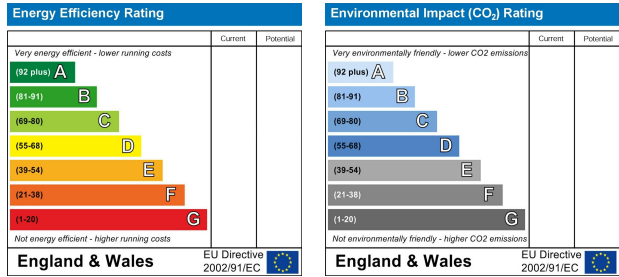
Floor Plan



Area Map



Energy Efficiency Graph



These particulars, whilst believed to be accurate are set out as a general outline only for guidance and do not constitute any part of an offer or contract. Intending purchasers should not rely on them as statements of representation of fact, but must satisfy themselves by inspection or otherwise as to their accuracy. No person in this firms employment has the authority to make or give any representation or warranty in respect of the property.